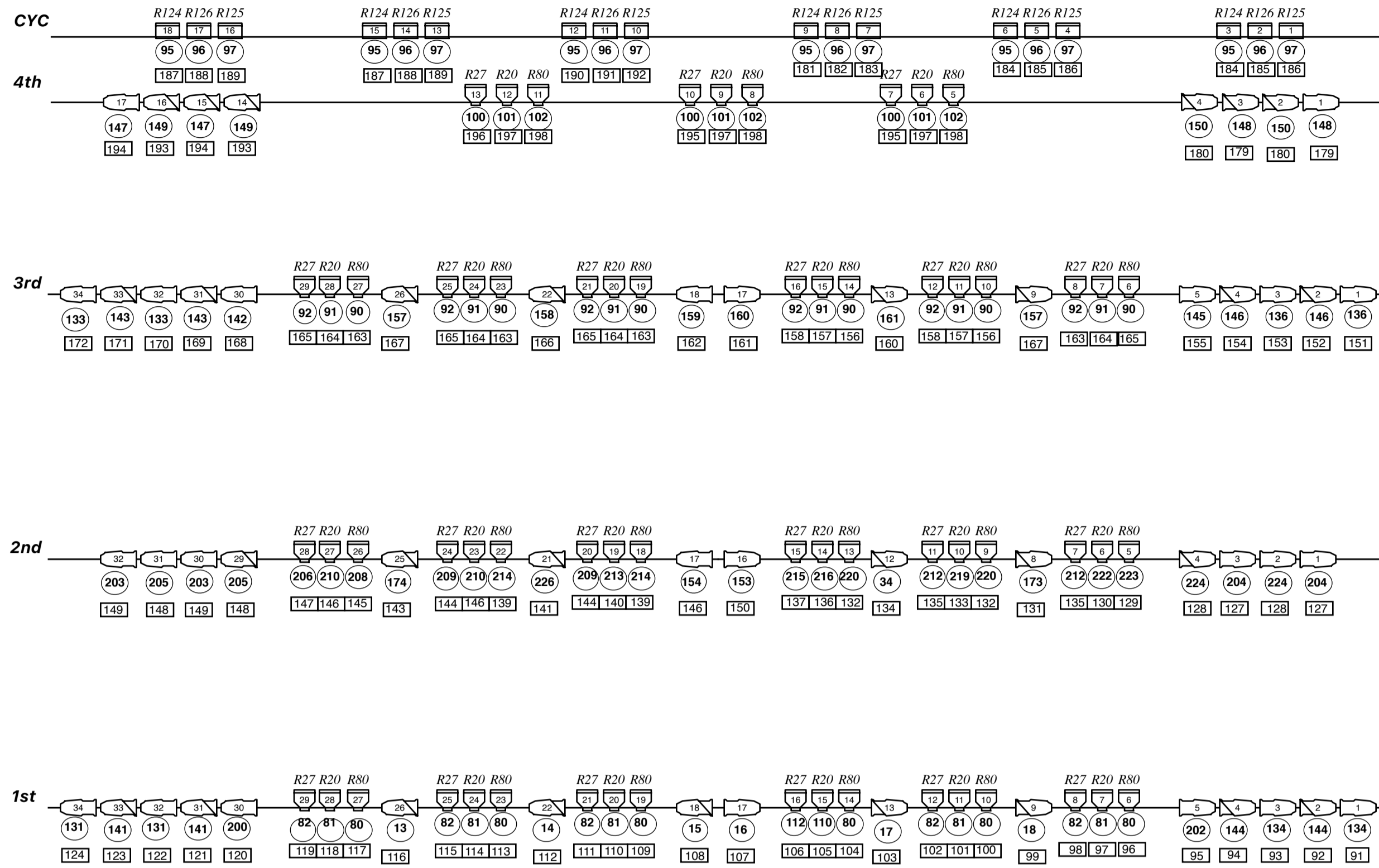
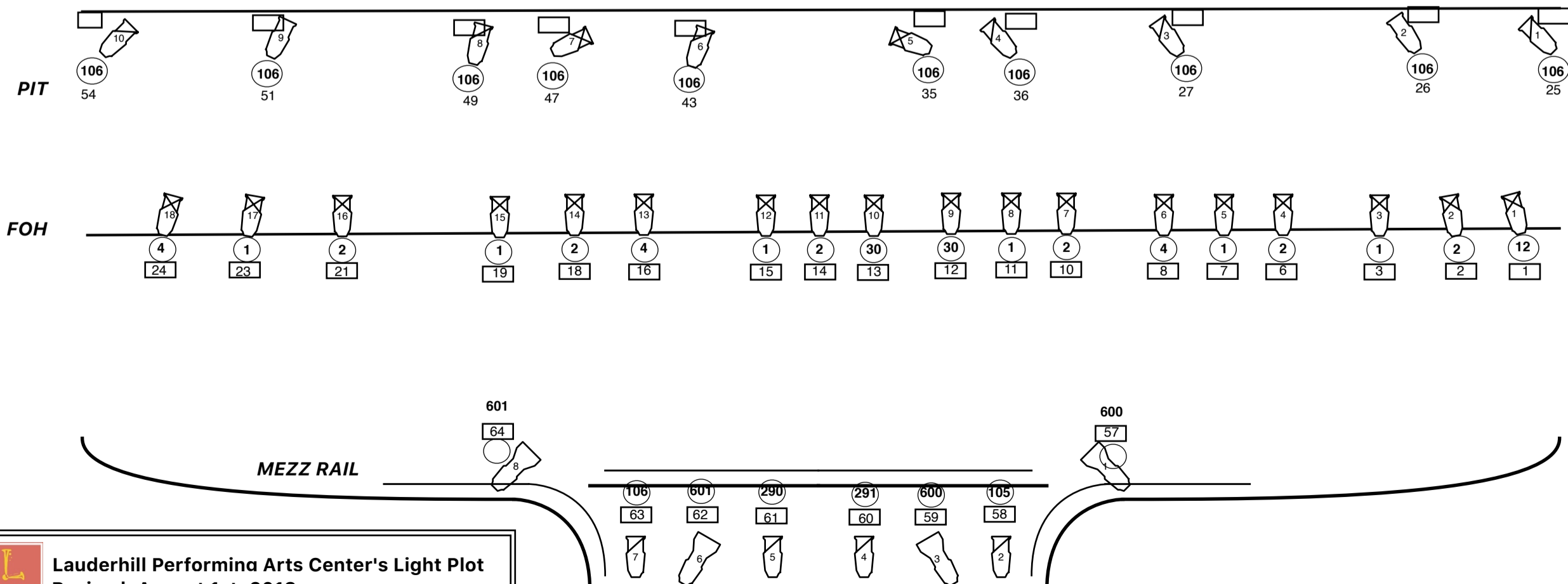
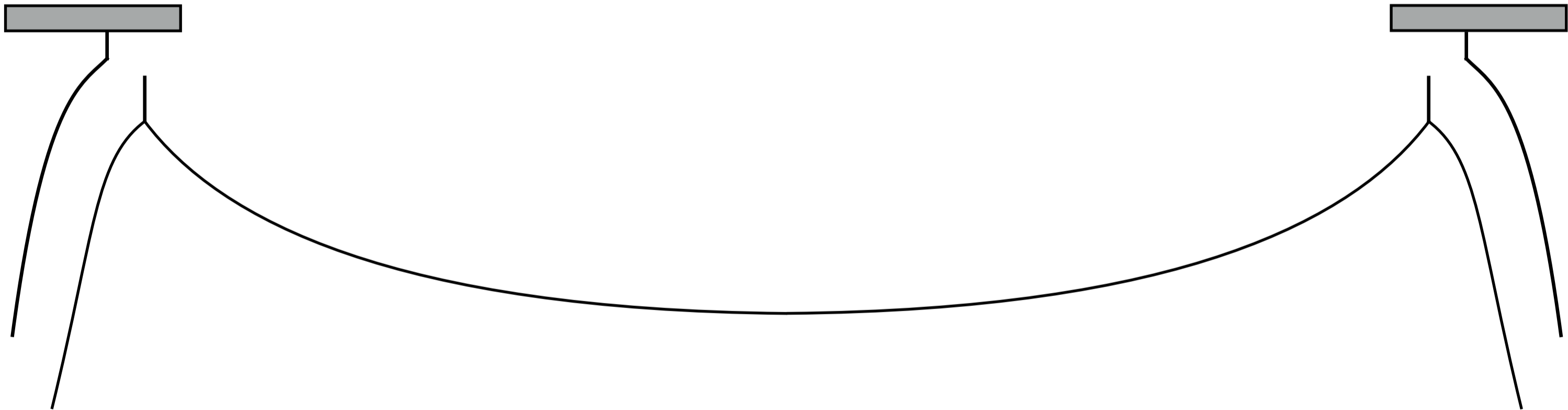


Stage Right

Stage Left



- 42. Storage
- 41. Cyclorama
- 40.
- 39. 6th leg
- 38. 5th Boarder
- 37.
- 36.
- 35.
- 34.
- 33. CYC
- 32.
- 31. 4th Electric
- 30.
- 29. 5th leg
- 28. 4th boarder
- 27. Rear Projection Screen
- 26.
- 25.
- 24. 4th leg
- 23. 3rd Electric
- 22.
- 21. Mid Black
- 20.
- 19.
- 18. Movers
- 17. 3rd leg
- 16. 3rd boarder
- 15.
- 14. Black Scrim
- 13.
- 12. 2nd Electric
- 11.
- 10.
- 9. 2nd leg
- 8. 2nd boarder
- 7.
- 6. Projector
- 5.
- 4. Front Projection Screen
- 3. Wireless Mic X.O
- 2.
- 1. 1st ELECTRIC
- HC
- TRS



Legend

- cc — Color
- # — Equipment #
- — Dimmer
- — Channel
- Channel
- Source Four 10°
- Source Four 36°
- Source Four 26°
- Source Four 19°
- Source Four PAR
- Altman Sky Cyc 3 cell/3 circuit

L
LAUDERHILL
Lauderhill Performina Arts Center's Light Plot
Revised: August 1st, 2018
3800 Northwest 11th Place, Lauderhill, FL 33311

Scale: 1/8" = 1'